

WE VALUE



YOUR HOME



Wey Road, Berinsfield
£1,550 Per Month



Available Immediately for Long-Term Let, Unfurnished

This three-bedroom end-of-terrace home enjoys a host of desirable features and a fantastic position overlooking, with direct access to nearby green space and parkland. The property benefits from a new boiler and a Hive heating system allowing remote control of the heating.

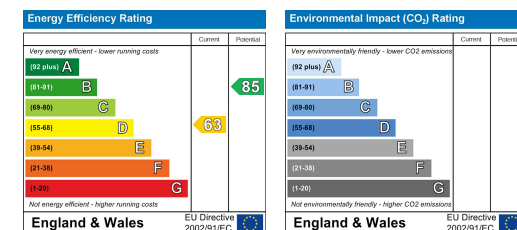
The accommodation comprises a lounge with an electric fireplace, opening through to a kitchen/diner, creating an ideal space for everyday living and entertaining. A ground floor cloakroom completes the downstairs layout.

Upstairs are three well-proportioned bedrooms, all with fitted wardrobes, along with a family bathroom. Externally, the home boasts a west-facing front garden and an east-facing rear garden, perfect for enjoying the sun throughout the day.



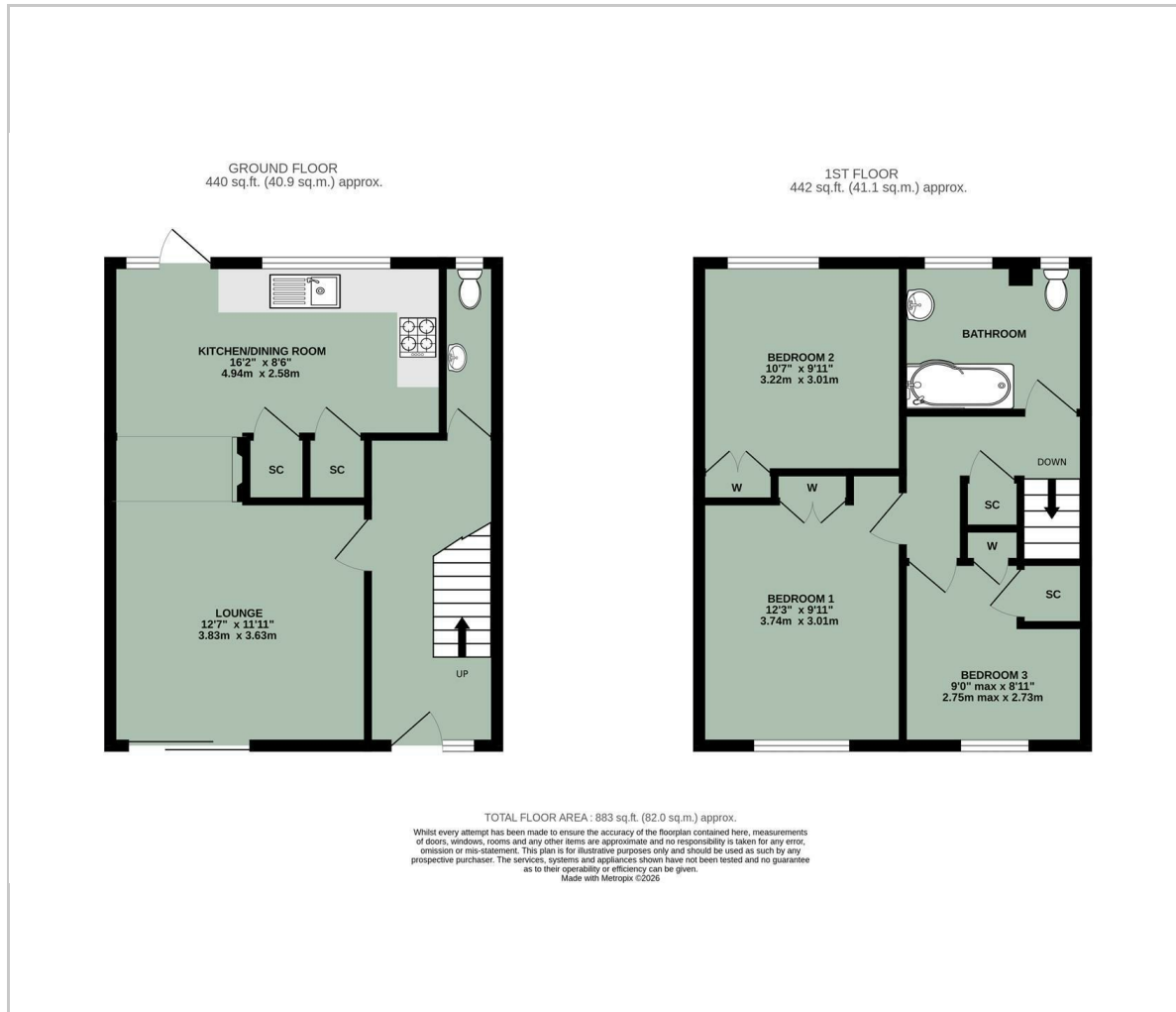


- AVAILABLE IMMEDIATELY FOR LONG-TERM LET, UNFURNISHED
- THREE BEDROOMS
- FRONT & REAR GARDENS
- HIVE HEATING SYSTEM - REMOTE HEATING CONTROL
- VILLAGE LOCATION
- PRIME POSITION WITH PARK VIEWS & IMMEDIATE ACCESS TO GREEN SPACE



Energy Efficiency Graph

Floor Plan



Area Map



Viewing

Please contact our In House Sales & Lettings Office on 01491 839999 opt.1 if you wish to arrange a viewing appointment for this property or require further information.

These particulars, whilst believed to be accurate are set out as a general outline only for guidance and do not constitute any part of an offer or contract. Intending purchasers should not rely on them as statements of representation of fact, but must satisfy themselves by inspection or otherwise as to their accuracy. No person in this firm's employment has the authority to make or give any representation or warranty in respect of the property.

28 St Martins Street, Wallingford, Oxfordshire, OX10 0AL
Tel: 01491 839999 opt.1 Email: sales@inhouseestateagents.co.uk www.inhouseestateagents.co.uk